

Technical Information 414

Centrifugal-feeding system for the medical technology



ZBV-ZS 750 for syringes

Advantages of application:

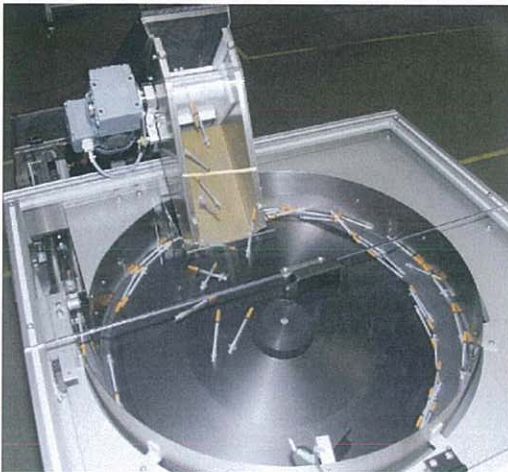
- High feeding capacity: >300 parts/min.
- Low-noise level: < 70 db(A)
- Careful transport of parts
- Minor floor space required
- Refitting possible within part family

Fields of application:

- Medical technique
- Pharmaceuticals / cosmetic industry
- Plastics / metal industry
- Test technique

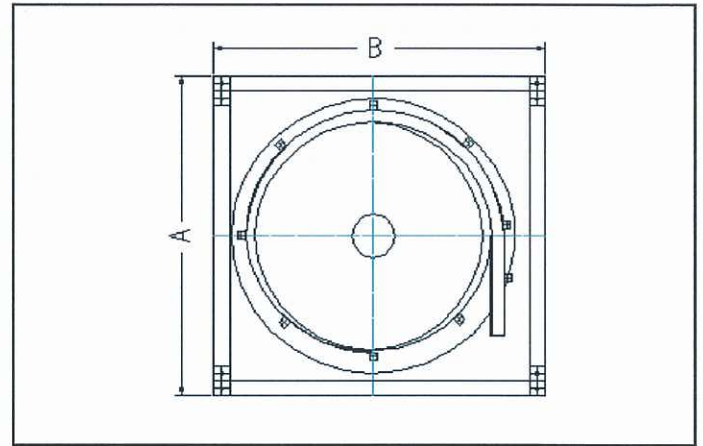
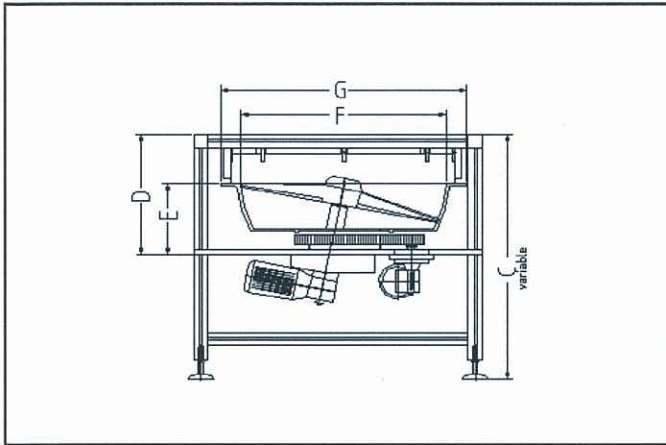
Functional principle:

The syringes are portioned onto the centrifugal plate by means of part hopper. It distributes the syringes on its plate perimeter. At the highest point of the plate edge the syringes slide onto the centrifugal pot, and here they are sorted by means of sorting baffles, position of parts = longitudinal. At the outlet of the centrifugal pot the syringes slide to the rolling output and hereby they slip into the following machine.



Standard modules

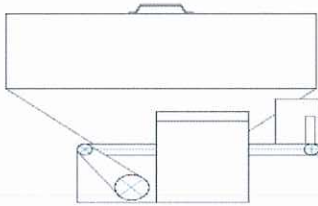
Centrifugal Feeder ZBV-ZF



Dimension table (mm)								Motor data		
Type	A	B	C	D	E	F	G	Type	Connection	Capacity
ZBV-ZF 300	600	600	variable	275	140	300	380	Three-phase with thermal protection	480 V / 60 Hz (230 / 400 V / 50 Hz)	0,12 kW / 0,18 kW
ZBV-ZF 500	760	760	variable	320	165	500	600			0,12 kW / 0,18 kW
ZBV-ZF 625	900	900	variable	350	180	625	745			0,12 kW / 0,18 kW
ZBV-ZF 750	1050	1050	variable	450	280	750	900			0,25 kW / 0,37 kW
ZBV-ZF1000	1350	1350	variable	500	320	1000	1160			0,37 kW / 0,55 kW

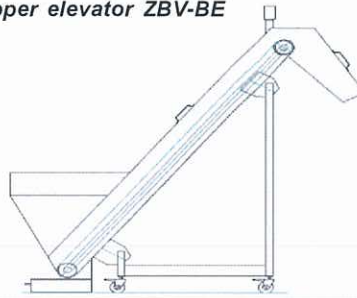
Hopper

Hopper cap ZBV-BA



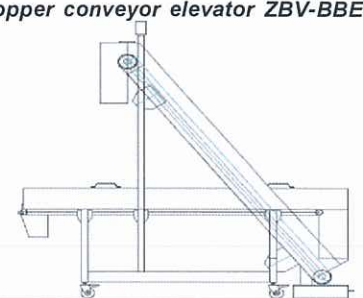
	ZBV-BA 100	ZBV-BA 200
Filling volume	100 l	200 l
Floor space required (mm)	L 700 W 700 H 500	on request
Filling height (mm)	1300	
Motor	Three-phase with thermal protection, 480 V / 60 Hz (230 / 400 V / 50 Hz)	
Belt speed	Adjustable by frequency converter ZBV-FU	

Hopper elevator ZBV-BE



	ZBV-BE 500	ZBV-BE 1000
Filling volume	500 l	1000 l
Floor space required (mm)	L 2200 W 1100 H 2500	2700 1250 2500
Filling height (mm)	1100	1200
Motor	Three-phase with thermal protection, 480 V / 60 Hz (230 / 400 V / 50 Hz)	
Belt speed	Adjustable by frequency converter ZBV-FU	

Hopper conveyor elevator ZBV-BBE



	ZBV-BBE 500	ZBV-BBE 1000
Filling volume	500 l	1000 l
Floor space required (mm)	L 2400 W 1100 H 2400	on request
Filling height (mm)	1200	
Motor	Three-phase with thermal protection, 480 V / 60 Hz (230 / 400 V / 50 Hz)	
Belt speed	Adjustable by frequency converter ZBV-FU	